

# SonoSite X-Porte

ONE LOOK AND  
THE DIFFERENCE  
IS CLEAR.

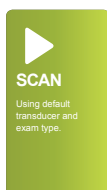




X-Porte represents an entirely new approach to clinical ultrasound. Its imaging, features, and educational resources are fluidly brought together in a convenient, all-in-one kiosk design.

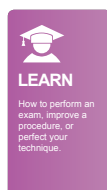
At the sweep of your hand, it responds so quickly and intelligently to your imaging needs, you'll know it was created precisely for professionals like you. Its self-explanatory control panel makes system navigation a breeze, and its sealed touch screen has no buttons for pathogens to hide behind.

X-Porte's slender profile makes it easy to manoeuvre alongside beds and exam tables for point-of-care visualisation and procedures. For portability and durability during transport, its screen folds down and its stand lowers making X-Porte even more compact for navigating busy corridors. The X-Porte ultrasound core can be detached easily from the kiosk to provide another configuration option. For servicing, nothing could be more convenient than X-Porte's five-year warranty and removable engine.



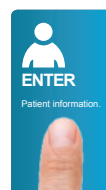
## Breakthrough XDI Imaging

X-Porte's XDI beam-forming technology was created to meet the challenge of side-lobe artifacts, so now you can scan with image clarity, resolution, and colour sensitivity never before seen in point-of-care ultrasound systems.



## Real-Time Scan Along Learning

For instant reference, scan along with an onboard library of Visual Guides featuring step-by-step learning tutorials. Use X-Porte's Visual Guides for comparing 3D beam-direction animations to corresponding 2D ultrasound images.



## Gesture-Driven Interface

Optimised workflow is always at your fingertips. Easily customise the interface to suit your needs. Don't like the order of menu items? Change them. Too many controls? Minimise them.





# THE WORLD'S FIRST ULTRASOUND KIOSK.

One look and the difference is clear—extreme definition imaging technology drives X-Porte's image clarity and resolution by significantly reducing visual clutter.



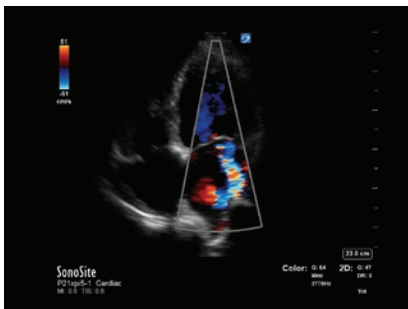
*GallBladder*



*Sciatic Nerve*



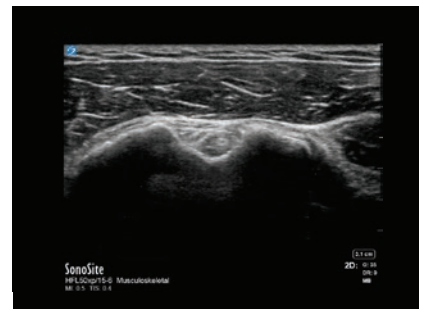
*Kidney Blood Flow*



*Apical Mitral Flow*



*Foetal Profile*



*Biceps Tendon*

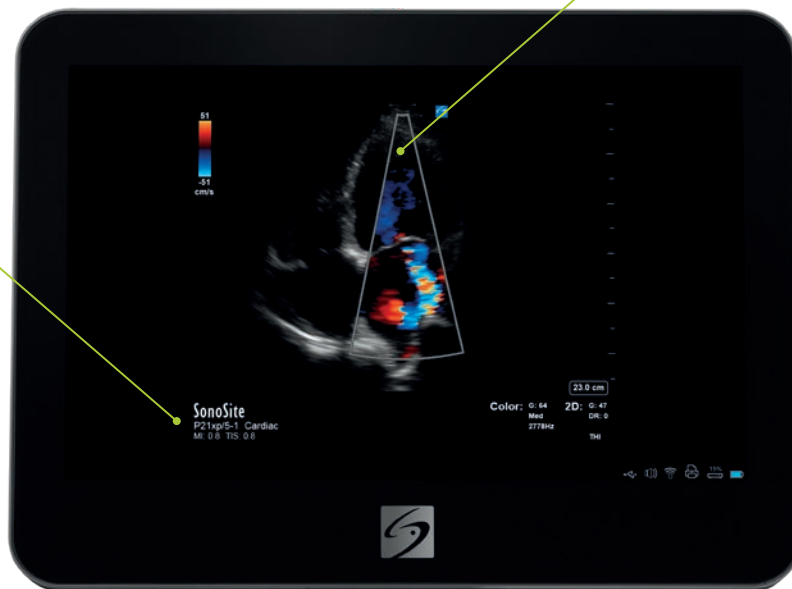


# SonoSite X-Porte

## SONOSITE X-PORTE MAIN FEATURES AT A GLANCE.

Designed for easy cleaning,  
the sealed touch screen  
has no buttons or levers for  
pathogens to hide behind

Extreme Definition Imaging (XDI)  
substantially reduces visual clutter  
while significantly enhancing clarity.



Customisable to suit your needs, workflow  
optimisation is at your fingertips with the  
intuitive gesture-driven interface

During live scanning, simultaneously  
access the on-board library of education  
videos for in-the-moment learning.



## SONOSITE X-PORTE TRANSDUCERS



### C11xp

**8-5 MHz Curved**

**Applications:**

abdominal, arterial, neonatal, nerve, venous

**Scan depth: 15 cm**



### C35xp

**8-3 MHz Curved**

**Applications:**

abdominal, musculoskeletal, nerve

**Scan depth: 16 cm**



### C60xp

**5-2 MHz Curved**

**Applications:**

abdominal, gyn, musculoskeletal, nerve, ob

**Scan depth: 30 cm**



### ICTxp

**9-5 MHz Curved**

**Applications:**

gyn, ob

**Scan depth: 15 cm**



### P10xp

**8-4 MHz Phased**

**Applications:**

abdominal, cardiac, neonatal

**Scan depth: 15 cm**



### rP19xp

**5-1 MHz Phased**

**Applications:**

abdomen, cardiac, lung, ob, orbital, TCD

**Scan depth: 35 cm**



### HFL38xp

**13-6 MHz Linear**

**Applications:**

arterial, breast, lung, musculoskeletal, nerve, small parts, venous

**Scan depth: 6 cm**



### HFL50xp

**15-6 MHz Linear**

**Applications:**

breast, musculoskeletal, nerve, small parts

**Scan depth: 6 cm**



### HSL25xp

**13-6 MHz Linear**

**Applications:**

arterial, lung, musculoskeletal, nerve, ophthalmic, superficial, venous

**Scan depth: 6 cm**



### L25xp

**13-6 MHz Linear**

**Applications:**

arterial, lung, musculoskeletal, nerve, ophthalmic, superficial, venous

**Scan depth: 6 cm**



### L38xp

**10-5 MHz Linear**

**Applications:**

arterial, lung, nerve, small parts, venous

**Scan depth: 9 cm**



### TOE/TEExp

**8-3 MHz Phased**

**Applications:**

cardiac

**Scan depth: 18 cm**



### D2xp

**2 MHz Pencil**

**Applications:**

cardiac

**Scan depth: N/A**



Needle guides and kits available with the following transducers:

C35xp, C60xp, HFL38xp, HFL50xp, ICTxp, L25xp, L38xp, P10xp, and rP19xp.

A transverse needle guide is available with the L25xp.

Designed from the ground up for your work style and work environment, X-Porte offers you an entirely new ultrasound experience by providing these revolutionary tools in a unique, integrated system exclusive to SonoSite.

#### SYSTEM SPECIFICATIONS

<b>Stand Dimensions:</b>	67.1 cm x 53.9 cm/ 26.4" x 21.2" (LxW)
<b>Stand Height:</b>	max 162.6 cm/65" (monitor up) / min 107.2 cm/42.2" (monitor down)
<b>Height Adjustment:</b>	22.9 cm/9" travel 30.7 cm/12.1" Capacitive Touch Screen (multi-touch gestures for system controls)
<b>HD Monitor:</b>	48.3 cm/19" diagonally (minimum)
<b>Control Panel Tilt Adjustment:</b>	0° to 110°
<b>Clinical Monitor Viewing:</b>	85° left and right, 85° up, 85° down
<b>Architecture:</b>	All digital broadband
<b>Dynamic Range:</b>	Up to 183 dB
<b>Grey Scale:</b>	256 shades
<b>HIPAA Compliance:</b>	Comprehensive toolset

#### IMAGE MODES

2D Broadband imaging  
Tissue Harmonic Imaging  
Pulse Inversion Harmonic Imaging  
M Mode  
Velocity Colour Doppler  
Colour Power Doppler  
Pulsed Wave Doppler (update and simultaneous)  
Pulsed Wave Tissue Doppler  
Continuous Wave Doppler, ECG

#### IMAGE PROCESSING

Extreme Definition Imaging (XDI)  
SonoAdapt Tissue Optimisation  
SonoHD2 Imaging Technology  
SonoMB Multibeam Technology  
Dual Imaging  
Dual Colour Imaging  
AutoGain and AutoGain Brightness Adjust  
Restore Default Gains  
Dynamic Range  
Duplex Imaging  
8x Zoom Capability  
Cine Processing: Dynamic Range, Zoom  
2D Image Optimisation: Res, Gen, Pen  
Overall Gain, Near and Far Field Gain Control  
Colour and Doppler Flow Optimisation  
(low, medium, high)  
Colour Variance Mode  
2D Reduced Imaging Sector (steerable)

#### STEEP NEEDLE PROFILING

(Available on these transducers and exams.)  
**HFL50xp:** Breast, MSK, Nerve, Small Parts  
**L38xp:** Arterial, Nerve, Small Parts, Venous  
**L25xp:** Arterial, Nerve, MSK, Venous  
**HSL25xp:** Arterial, MSK, Nerve, Venous  
**HFL38xp:** Arterial, Breast, MSK, Nerve, Small Parts, Venous  
**C60xp:** MSK, Nerve  
**C35xp:** MSK, Nerve

#### POWER SUPPLY

System operates via battery or AC Power  
Rechargeable Lithium-ion Battery  
**Battery life:** 1.0 hour, 3 days on idle  
Battery charges to 80% capacity in 3 hours

#### OTHER HIGHLIGHTS

Programmable Controls  
**Labeling:** Predefined Labels, Customised Labels,  
Predefined Pictograms  
**Worksheets:** Editable Acute Care Worksheets  
(ACEP Guidelines) Musculoskeletal Worksheets and  
customisable worksheets  
Steep Needle Profiling software  
Embedded DVR (digital video recorder)\*  
Triple Transducer Connect\*  
Storage Basket\*  
Digital and VGA Video Out\*  
Auxiliary Transducer Holder\*  
AC Cord Retainer\*  
\*Standard with X-Porte

#### ONBOARD IMAGE AND CLIP STORAGE REVIEW

2D Cine Review – 20 seconds  
PW, CW, M Mode Cine Review – 16 seconds  
Internal Flash Memory – 64 GB  
Thumbnail review of saved images and clips  
Prospective and Retrospective Clip Store  
Auto Clip Export (auto export to USB at end of study)  
Video Clip Playback at 1, ½ or ¼ of the captured rate  
**Video Clip Save Lengths:** 2, 4, 6, 10, 15, 30 and 60  
seconds.  
Measure and calculate on recall  
Annotations on recalled images  
**Image Format:** JPEG, AVI, BMP  
**Export Format:** HTML  
**JPEG Compression Options:** High, Medium, Low

#### DATA MANAGEMENT AND WIRELESS

5 USB 2.0 Ports  
Ethernet Port  
DVR USB Port  
ECG Connector  
Bar Code Auto-query (populates patient's  
demographic from worklist)  
DICOM Image Management: Print, Store, Modality  
Worklist, Perform Procedure Step (PPS), Storage  
Commitment  
DICOM Image Management: Exam Routing for  
Diagnostic, Procedure, Education Exams  
2.4 GHz and 5 GHz Wireless: 802.11 (B, G and N  
networking)

#### ACCESSORIES

Medical Grade Black and White Printer  
USB Bar Code Reader  
Footswitch  
ECG Module  
ECG Slave Cable

#### SUPPORTED LANGUAGES

English, French, German, Italian, Portuguese,  
Spanish

#### ONBOARD GUIDES

Ultrasound Imaging Basics, Packages for Acute Care,  
MSK, Procedures, Anaesthesiology  
On-board System Help

Note: Desktop configuration available.

## FUJIFILM

Value from Innovation

**FUJIFILM SonoSite European Headquarters**  
FUJIFILM SonoSite BV  
Joop Geesinkweg 140  
1114 AB Amsterdam  
The Netherlands

**SonoSite Ltd**  
Phone: +44 1462 341 151  
E-mail: [ukresponse@fujifilm.com](mailto:ukresponse@fujifilm.com)  
[www.sonosite.com/uk](http://www.sonosite.com/uk)

#### SonoSite Worldwide Offices

FUJIFILM SonoSite Australasia Pty Ltd: Australia ..... 1300 663 516  
FUJIFILM SonoSite Australasia Pty Ltd: New Zealand ..... 0800 888 204  
FUJIFILM SonoSite Brazil ..... +55 11 5574 7747  
FUJIFILM SonoSite Canada Inc. .... +1 888 554 5502  
FUJIFILM (China) Investment Co., Ltd. .... +86 21 5010 6000  
FUJIFILM SonoSite GmbH – Germany ..... +49 69 80 88 40 30  
FUJIFILM SonoSite, Inc. – USA ..... +1 425 951 1200

FUJIFILM SonoSite India Pvt Ltd. .... +91 124 288 1100  
FUJIFILM SonoSite Iberica SL – Spain ..... +34 91 123 84 51  
FUJIFILM Medical Co., Ltd. – Japan ..... +81 3 0418 7190  
FUJIFILM SonoSite Korea Ltd ..... +65 6380 5589  
FUJIFILM SonoSite Ltd – United Kingdom ..... +44 1462 341 151  
FUJIFILM SonoSite SARL – France ..... +33 182 880 702

SONOSITE, the SONOSITE logo and X-PORTE are trademarks and registered trademarks of FUJIFILM SonoSite, Inc. in various jurisdictions.  
FUJIFILM is a trademark and registered trademark of FUJIFILM Corporation in various jurisdictions.

All other trademarks are the property of their respective owners.

Copyright © 2019 FUJIFILM SonoSite, Inc. All rights reserved. Subject to change.

MKT02538\_UK Rev L 04/2019